

Invasives Overview

Backyard Habitat Certification Program

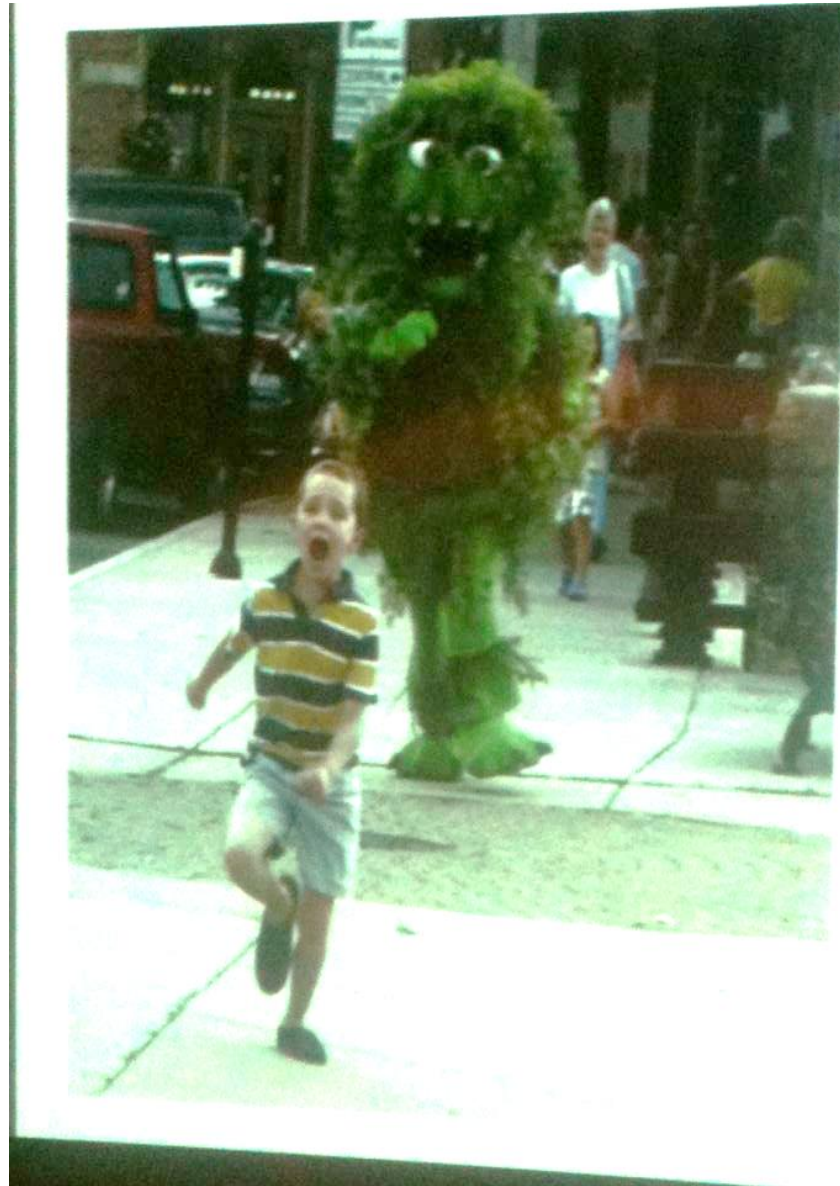


WEST MULTNOMAH
Soil & Water Conservation District

Goals:



- Botany & weed management
- Identification of BYHCP invasive plant species
- Additional resources...



Invasive plants are scary, but the first step is properly identifying what plant you are dealing with (some are truly monsters)

Plant lifecycles

- **Annual** - Plants perform their entire life cycle from seed to flower to seed within a single growing season.



<http://www.kingcounty.gov/>

Germinates from February – March



Flowers from June to October

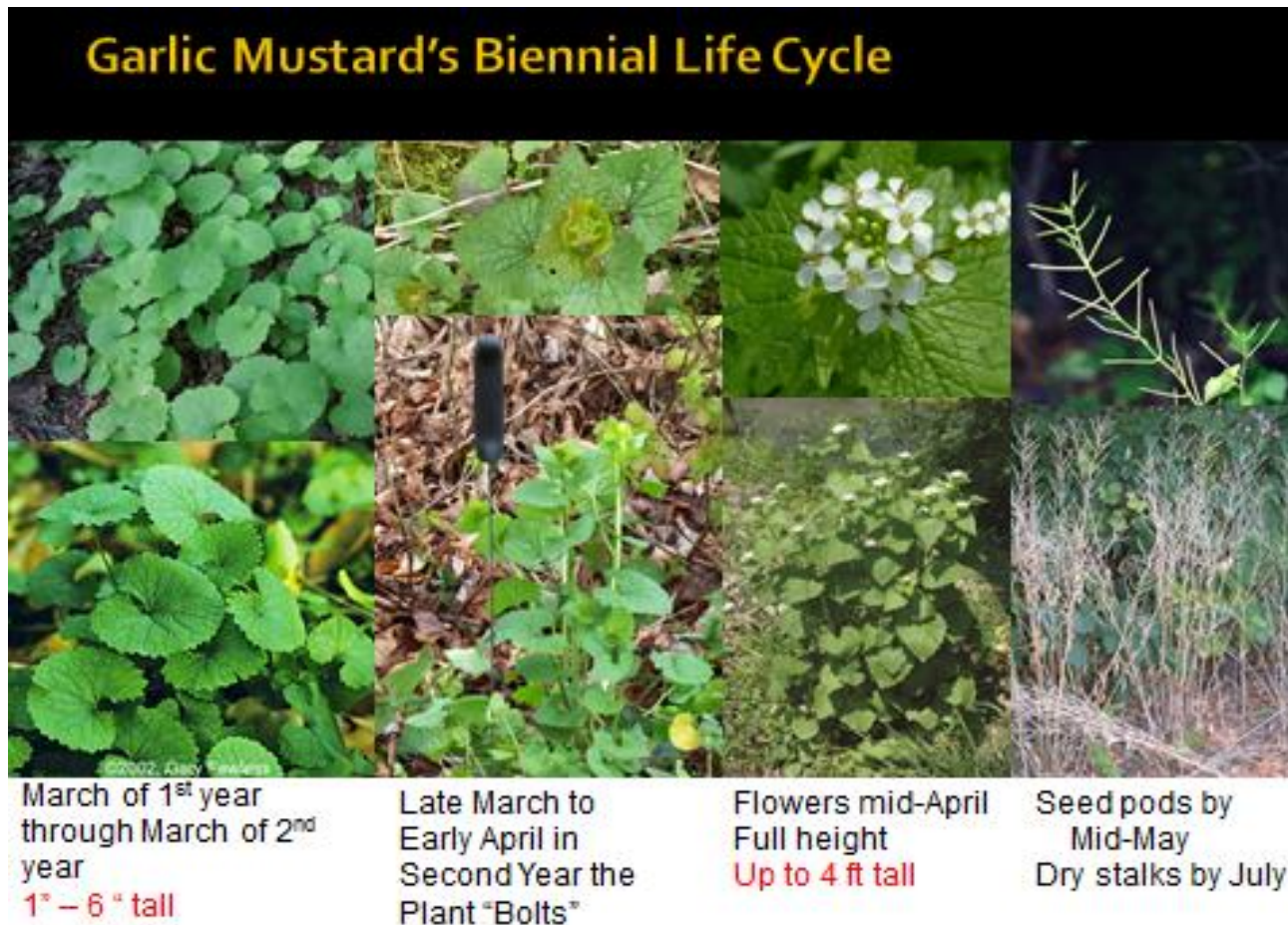


Up to 800 seeds viable for 18 months



Plant lifecycles

- **Biennials** - Plants require two years to complete their life cycle.



Plant lifecycles

- **Perennials** - Plants persist for many growing seasons.



Plant “lifecycles”

- **Vegetative Reproduction** - Vegetative reproduction is a form of asexual reproduction in plants. It does not involve flowers, pollination and seed production. Instead, a new plant grows from a vegetative part, usually a stem, of the parent plant. Note also, Vines.



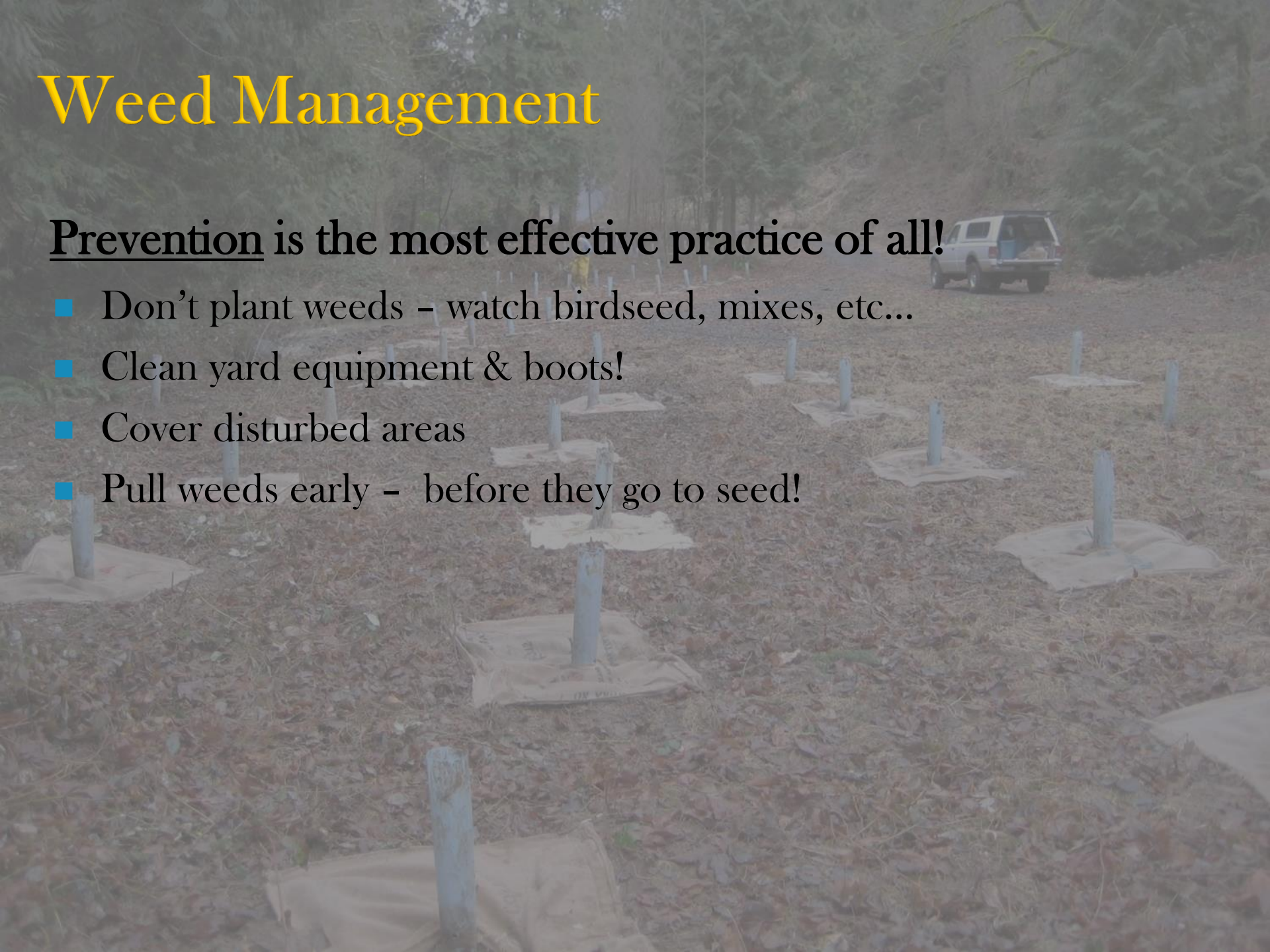
‘Invasive’ characteristics

- Outcompete natives
- Lack predators
- Highly successful seed dispersal, germination and colonization
- Vegetative growth
- Have few pests or diseases
- Growth season/cycle opportunist
- Some allelopathic

Weed Management

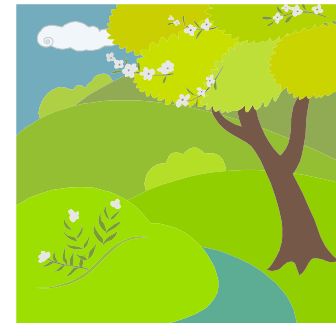
Prevention is the most effective practice of all!

- Don't plant weeds – watch birdseed, mixes, etc...
- Clean yard equipment & boots!
- Cover disturbed areas
- Pull weeds early – before they go to seed!



How weeds spread (*key to prevention)

- Humans
- Pets
- Wildlife
- Water
- Wind
- Vehicles
- Machinery
- Gifts/swaps
- Soil disturbance



Integrated Pest Management (IPM)

Mechanical

- Mowing, hand pulling, cutting, burning, boiling

Cultural

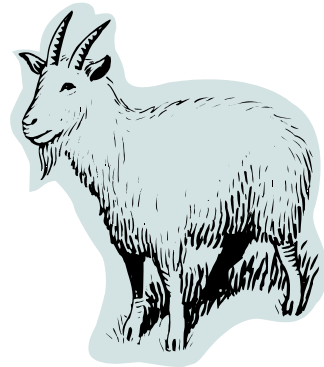
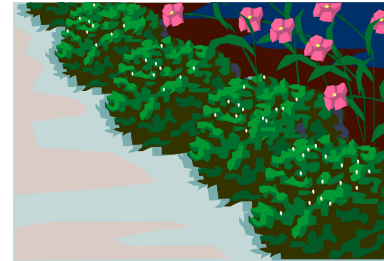
- Shading, plant appropriate competitive vegetation

Biological

- Parasites, predators, and pathogens; generally not appropriate for eradication alone

Chemical

- Spraying, painting, foams



Herbicides

Use only as part of an IPM & with care!

- Utilizing a licensed contractor.
- Read and follow the label carefully – label is law!
- Understand toxicity:
 - Grow Smart Grow Safe www.growsmartgrowsafe.org
 - MSDS Safety Sheets <http://www.cdms.net/LabelsMsds/>
- Organic herbicide is still herbicide!
 - Clove & Citric Oils (i.e. Burnout)
 - Corn Gluten
 - Vinegar
 - ~~Salt~~ – Just say no!
- Understand the herbicide your using (& its formulation & its surfactants) and the best time to apply:
 - Glyphosate (Roundup, Rodeo)– plant growth inhibitor
 - Triclopyr (Garlon 3A Formulations, Amine Salt) – plant growth regulator

Common IPM groupings

- **Invasive Forbs:** Digging, solarizing, spraying, fire
- **Invasive Shrubs:** Cut & dig combinations, cut stump and spray, goats
- **Invasive Vines:** Cut at base and address roots, treat climbing vines first
- **Invasive Trees:** Dig, weed wrench, cut stump, hack and squirt, stump grinder

Proper disposal of INVASIVE weeds

- Grey area...
- Put fresh noxious and perennial weed materials in seed or with bulbs in your garbage
- Don't toss weed material into natural areas
- Composting depends...



Silver

**Backyard Habitat
Certification
Program**



Silver



Pokeweed (*Phytolacca americana*)



Garlic mustard (*Alliaria petiolata*)



Spurge laurel (*Daphne laureola*)



Yellow-flag iris (*Iris pseudacorus*)

Silver



Purple loosestrife (*Lythrum salicaria*)



Knotweed (*Polygonum/Fallopia*)



English/Irish ivy (*Hedera* spp.)

Silver

Scot's broom (*Cytisus scoparius*)

Giant hogweed (*Heracleum mantegazzianum*)



Blackberry ((*Rubus* spp.))



Meadow hawkweed (*Hieracium caespitosum*)

Silver



Orange hawkweed (*Hieracium aurantiacum*)



Spotted knapweed
(*Centaurea biebersteinii*)



Diffuse knapweed
(*Centaurea diffusa*)



Meadow knapweed (*Centaurea jacea* x *nigra*)

Silver



Policeman's helmet (*Impatiens glandulifera*)



Yellow archangel
((*Lamium galeobdolon*))



Gold

**Backyard Habitat
Certification
Program**



Gold



False-brome (*Brachypodium sylvaticum*)



Butterfly bush
(*Buddleia davidii*)



Pampas/jubata grass
(*Cortaderia selloana* & *C. jubata*)



Shiny geranium (*Geranium lucidum*)

Gold



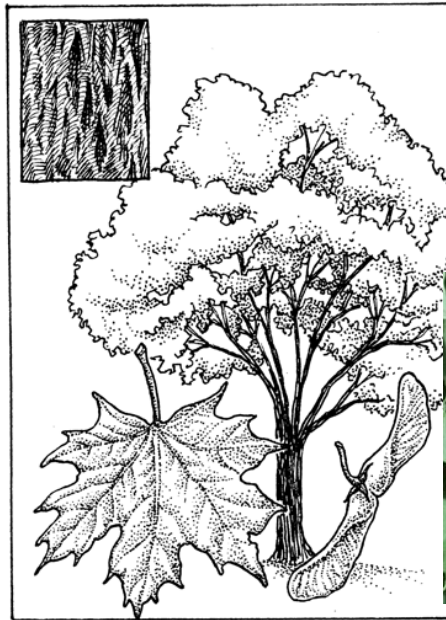
Herb Robert (*Geranium robertianum*)



ONLY VISIBLE JAN - APR/MAY

Lesser celandine (*Ranunculus ficaria*)

Hedge bindweed



Norway maple (*Acer platanoides*)



Gold



Tree-of-heaven (*Ailanthus altissima*)



English holly (*Ilex aquifolium*)



English hawthorn (*Crataegus monogyna*)



Black locust (*Robinia pseudoacacia*)

Gold



Italian arum, lords 'n ladies
(*Arum italicum*)



Japanese buttebur
(*Petasites japonicas*)



Platinum

Backyard Habitat Certification Program





Platinum

Large- & Small-leaf periwinkle (*Vinca major* & *minor*)



Fennel, anise
(*Foeniculum
vulgare*)



Reed canarygrass & Ribbongrass (*Phalaris arundinacea*)

Platinum



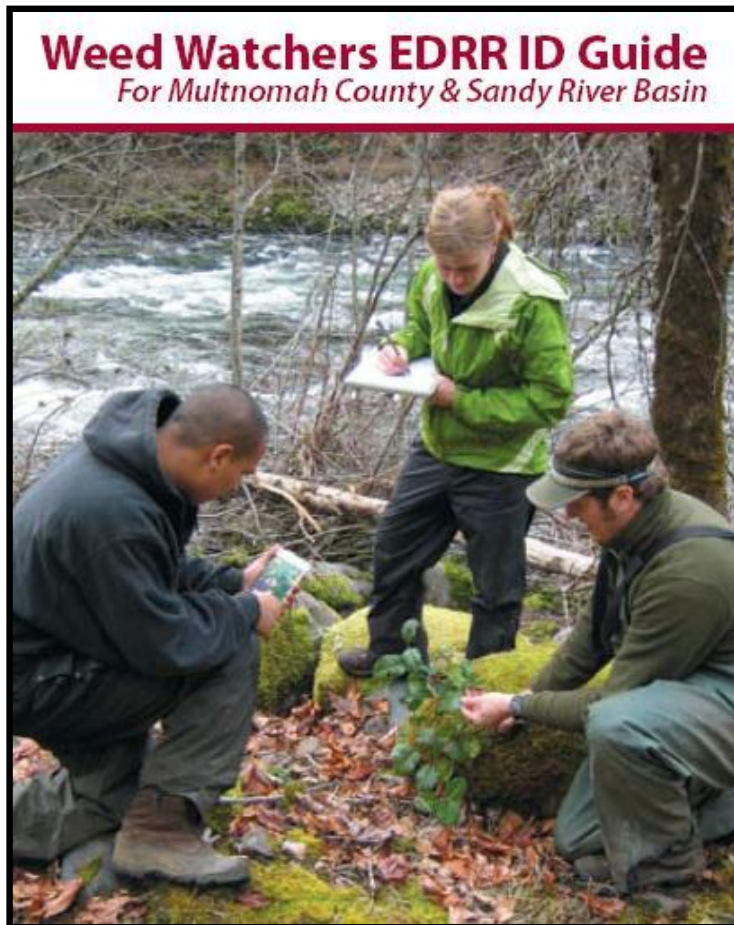
English laurel (*Prunus laurocerasus*)

Creeping jenny
(*Lysimachia nummularia*)



Portuguese laurel
(*Prunus lusitanica*)

Become a Weed Watcher!




CONTACT:

Michelle Delepine
michelle@wmswcd.org

Become a Weed Watcher!

**4/24 6-8pm Tualatin Soil & Water
Conservation District Office**
7175 NE Evergreen Pkwy #400
Hillsboro, OR 97124

4/30 6-8pm PCC Rock Creek Campus
Building #2 Room 110
11705 NW Springville Rd.
Portland, OR 97229



**5/8 6-8pm City of Tigard
Public Works Auditorium**
8777 SW Burnham St.
Tigard, OR 97223

5/14 6-8pm Pacific University
McGill Auditorium
2043 College Way
Forest Grove, OR 97116

5/21 6-8pm St. Andrew Lutheran Church
12405 SW Butner Rd.
Beaverton, OR 97005



**Tualatin
Watershed
Weed
Watchers**

Concerned about Invasive Weeds?

- Talk with weed experts.
- Discover how to help.
- Learn from live samples.
- Free field ID book.
- Bring in mystery plants for identification.

**For more information and to RSVP visit
our website at www.tualatinswcd.org**

Web Resources

Noxious Weeds of Oregon State (Photos, Range & Description):

<http://www.oregon.gov/ODA/PLANT/WEEDS>

General Info, including control and id:

<http://www.invasive.org>

<http://4countycwma.org/>

<http://www.wmswcd.org>

<http://emswcd.org/weeds>

<http://www.opb.org/programs/invasives>

<http://www.kingcounty.gov/environment/animalsandplants/noxious-weeds.aspx>

<http://www.invasivespeciesoforegon.com>

<http://www.westerninvasivesnetwork.org>

<http://www.metromastergardeners.org/multnomah/>

Reporting:

www.oregoninvasiveshotline.org

Helpful Books

Weeds of the West

Western US Cooperative Extension Services
Tom Whitson, Editor; 2001

Northwest Weeds

Ronald J. Taylor; 2003

Plants of the Pacific Northwest Coast

Jim Pojar and Andy Mackinnon; 1994

Handbook of Northwestern Plants

Helen Gilkey and LaRea J. Dennis; 2001

Gardening with Native Plants of the Pacific Northwest

Arthur Kruckeberg; 2003

Trees and Shrubs for Pacific Northwest Gardens

John Grant, et. al.; 2003

GardenSmart Oregon

Portland BES

Need Plant ID Help?



Multnomah County

Phone: 503-445-4608

Email: mcmastergardeners@yahoo.com

Address: 2701 NW Vaughn St. Suite 450 Portland, OR 97210

Hours: 10 AM - 2 PM, Monday - Friday

THANK YOU!

Michelle Delepine, West Multnomah SWCD

503-238-4775 x 115

michelle@wmswcd.org

www.wmswcd.org

